



Overview and Scrutiny Committee Agenda

Wyre Borough Council
Date of Publication: 22 February 2021
Please ask for: Emma Keany
Democratic Services Officer

Overview and Scrutiny Committee meeting on Monday, 1 March 2021 at 6.00 pm via WebEx.

Members of the Public will be able to view the meeting via the Council's YouTube page (<https://www.youtube.com/user/WyreCouncil/>)

4. Wyre Community Safety Partnership – annual scrutiny review (Pages 3 - 6)

Inspector Kevin Lister (Wyre Neighbourhood Inspector), Neil Greenwood (Head of Environmental Health & Community Safety) and Councillor Roger Berry (Neighbourhood Services and Community Safety Portfolio Holder) will attend the meeting to provide an update on the Wyre Community Safety Partnership.

5. PREVENT- LGA guidance (Pages 7 - 18)

In late August 2020, the Local Government Association and the Centre for Public Scrutiny (now the Centre for Governance and Scrutiny) released their guidance on the effective scrutiny of counter-extremism and the Prevent duty.

The guidance was developed with support from the Home Office and as this meeting is themed “Police and Community Safety” it was agreed that the guidance would be brought to this committee meeting.

Police Constable Paul Parkes (Counter Terrorism Policing North West-Cumbria & Lancashire) and Neil Greenwood (Head of Environmental Health & Community Safety) have been invited to the meeting to introduce the guidance.

This page is intentionally left blank

Annual Community Safety Report – 2020

SCOPE

Research and analysis for this document has been focused on the local priority areas and significant threats. Multi-agency data has been used to provide an objective understanding of key issues. This information has been obtained on the 8th February 2022, unless stated otherwise. Analysis is focused upon the Wyre CSP Priorities for 2020 based on the Strategic assessment completed in 2018 which are:

- Road Safety
- Victimisation
- Domestic Abuse
- Exploitation
- Substance Misuse – Alcohol & Drugs
- Anti-Social Behaviour
- Vulnerability

FINDINGS/SUMMARY

- A reduction has been shown for all crime.
- Violence against the person crimes have decreased by 7%.
- Domestic abuse has increased by 11% and increases were shown across Lancashire.
- Alcohol related crime has increased by +6%, most likely due to covid-19.
- ASB has shown a 53% increase, with a proportion of these covid-19 related incidents

Performance Update

In terms of overall crime levels they have reduced by 9%, seeing a significant reduction in violence against the person, this could in part be explained, by the reduction in the activities of the hospitality trade, resulting in fewer social interactions and therefore less opportunities for trouble to arise in these venues.

Unfortunately because individuals are staying at home more, there has been an increase domestic abuse crimes being reported. The fact that there has been an increase in alcohol related crime does suggest that the majority of this crime is also occurring within the home as well.

There has also been a significant increase in anti-social behaviour reported. A proportion of these are covid-19 related- reports of neighbours breaking rules, parties etc. Moreover, increases were reported across the whole of Lancashire.

The response to the Covid 19 pandemic has impacted on all partner agencies involved in crime prevention, all of whom have had to adapt their systems and the table below provides an up to date picture of crime in Wyre.

Category	Actuals Dec 18- Nov 19	Actuals Dec 19- Nov 20	Percentage change- Wyre	Percentage change- Lancashire
<i>All Crime</i>	7392	6540	-12%	-15%
<i>Domestic Incidents</i>	1109	1124	+1%	+11%
<i>Domestic Abuse Crimes</i>	1118	1236	+11%	+11%
<i>Domestic Assault Crimes (DV)</i>	597	640	+7%	+8%
<i>Violence against the person</i>	2992	2786	-7%	-6%
<i>Alcohol related crime</i>	556	587	+6%	+7%
<i>Anti-social behaviour</i>	3072	4704	+53%	+55%

*Sourced from MADE, Lancashire Insight Website, data is based on the period December 2019-November 2020.

Wyre Council - Community Safety Partnership Work 2020

- 1. Anti-Social Behaviour** – As reported in 2020 Wyre holds regular ASB meetings where partners from across the community safety sector meet to discuss individuals and locations involved in anti-social behaviour.

The Pandemic initially prevented those meetings taking place because most agencies were working from home. However the work of the partners continued initially by utilising the relationships built up over a last few years and using email and phone communication.

Since the summer the ASB group have been meeting virtually ensuring that this important work has continued throughout the Pandemic.

On top of the normal work described in last year's report during the first lockdown Wyre - Environmental Protection Team assisted the police in serving Anti-Social Behaviour - Community Protection Notices on several households who were ignoring the government advice on social distancing and holding parties in their houses. This provides an example of the type of Covid 19 work being undertaken.

- 2. Domestic Homicide Review** – During the course of 2020 the Community Safety partnership identified a domestic homicide case in our area. As a consequence the Community Safety Partnership must undertake a domestic homicide review of the case in order to look at the roles of all agencies, who had contact with the deceased and produce a report which will eventually be signed off by the Home office. The aim is to review the work and learn from any mistakes to see if we can improve the workings of agencies in our area.

An independent chair was appointed to oversee this work, and is being supported by the Health & Early action partnership officer.

The report is due to be completed before summer 2021.

- 3. Wyre & Fylde Integrated Team** - During 2019 The Wyre and Fylde Integrated team had been set up and implemented to deal with vulnerable individuals which is also a priority for the Community Safety Partnership. The Integrated team is co-ordinated by Wyre Council Health & Early Action partnership officer.

During the first lockdown the Health & Early Action partnership officer was redeployed to assist with the delivery of the social hubs resulting in a suspension of meetings.

The social hub was about ensuring vulnerable people as far as possible could shield and the individuals being discussed in the Wyre & Fylde integrated hub were often part of that co-hort.

Following the easing of the 1st lockdown whilst still maintaining strong links with the social hub, virtual integrated team meetings were once again resumed and remains an important community safety tool.

- 4. Develop Mobile Camera Evidence Collection capability** – I reported last year that a review will be undertaken during the course of the financial year 2020. Unfortunately this has not been completed, however I can report that the cameras are being well used and have provided useful evidence in a few cases.

- 5. CCTV** – Last year I reported that the team had experienced some picture quality issues. The Information Technology team at Wyre carried out some preliminary improvements to the broadband coming into the building and this has temporarily resolved the picture quality issues the team was experiencing.

The information Technology team are working on a scheme to improve broadband significantly, which will allow the analogue cameras (technologically being phased out and already difficult to replace.) currently employed to be replaced with digital cameras. This project will be started once the broadband has been improved sufficiently to enable digital cameras to be employed. The speed of the change will be based on budget availability.

- 6. PSPO** – Every 3 years current PSPO's require reviewing and during the last 12 months the PSPO covering the drinking of alcohol in Public spaces has been reviewed. Initially the existing PSPO was extended to allow the Environmental Protection and Community safety manager to undertake a consultation on the current areas covered by the PSPO. After consultation it was agreed that the entire urban area would be covered by the PSPO and the area covering Garstang would be

increased. It should be noted that PSPO allows police officers to intervene where drinking alcohol is resulting in anti-social behaviour. If the people approached fail to take notice of that intervention, then the Police can take appropriate action to resolve the behaviour of concern. A report on the issue has recently been submitted and approved by Cabinet.

- 7. Violence Reduction / Domestic Violence** – As reported last year a priority for the Police and Crime commissioner's office is to reduce violence. As a consequence this year funding has been made available to community safety partnerships to address this issue. It has however been recognised that this year has been challenging and therefore the funding is available into next year.

In Wyre Domestic violence has increased over the last 12 months and therefore we are in the process of developing a project utilising the no excuse for abuse campaign, which will involve raising awareness of the issue utilising all available communication channels, including advertising on bin lorries, phone cubicles and social media.

- 8. New Statutory duties** – It is likely that 2 new statutory duties will be introduced during the course of the Parliament, one with an explicit duty on Public Bodies to Protect the public from Terrorist attack and another to Reduce Serious Violence. Work on both these areas has started across the County of Lancashire. However these are important functions that will need to be addressed in the coming years. The duty to Protect is about identifying high risk sites and mitigating the risk as far as possible. The duty to reduce the risk of serious violence has always been a priority for the partnership but there is likely to be a need to have a specific plan covering the issue in the future.

Prevent Briefing.

Overview and Scrutiny 2021

Summary

Since 2015 it has been a statutory duty for all public sector organisations to engage with and participate in the home office Prevent Agenda. The prevent agenda aims to identify individuals who are at risk of being radicalised before they act criminally. Once identified interventions will be used to de-radicalise the individual reducing the risk that the individual will participate in criminal activity.

Prevent organisation in Lancashire

In Lancashire there is a Pan Lancashire Prevent Board, which is attended by senior officials from various Public Sector Agencies including all the District Local Authorities. In Wyre it has been agreed that the Corporate Director Environment will attend this meeting, the Board is responsible for the Pan Lancashire implementation of the Prevent agenda.

Sitting underneath the Board there are 3 are based practitioner groups, Wyre is located within the North West grouping and this meeting is chaired by the Blackpool lead practitioner. I attend this meeting on behalf of Wyre Council. The group has responsibility for implementing the prevent strategy.

Both these groups are supported by a dedicated prevent Hub which is currently based in the East of the County.

If an individual is identified within a particular area the case is referred to police CT teams and into the channel process. Essentially the Channel process is attended by a number of different agencies including the referrer and the individual is discussed and a tailored intervention plan is produced for that individual.

Each year Lancashire has to undertake a Counter Terrorism Local Profile, this is received by Prevent leads and provides latest intelligence on the threat facing the area.

In addition we receive regular updates from Paul team.

Wyre Role

Wyre role is in the main to ensure that its venues cannot be used to promote terrorist activity and that its IT equipment cannot be used to access terrorist material. I have been assured by both relevant Heads of service that this is the case.

The main role is however is to recognise individuals vulnerable to radicalisation and know how to refer those individuals into the channel process.

Within Wyre we have trained visiting staff on Prevent, when the statutory requirement was introduced in 2015. During 2019 we reviewed our safeguarding procedure and embedded Prevent into the safeguarding process. The safeguarding lead is the Head of Housing and we have 3 other safeguarding officers including myself, who is the lead for Prevent, and all of us have been provided with up to date contact details to refer individuals into the channel process should the need arise.

Essentially what we want is for our visiting officers to notice if something did not appear normal when they are going about their normal daily duty and report it to their line manager.

The line manager no matter how trivial are encouraged to contact any of the safeguarding officers to discuss the case, and where radicalisation was thought to be the concern the matter would be referred into the channel process via this process.

During 2020 we carried out virtual training on our new safeguarding procedures/ policy because training in a room has not been possible.

Just prior to the pandemic being declared we were able to run two workshops for Wyre staff and local businesses on Act Awareness attended by over 200 people.

As we have embedded prevent into safeguarding all visiting officers should receive repeat training on safeguarding.

Wyre referrals

Currently the number of referrals made by Wyre Council staff is low, what activity we are aware of has been in the main extreme right wing graffiti found within the Fleetwood area.

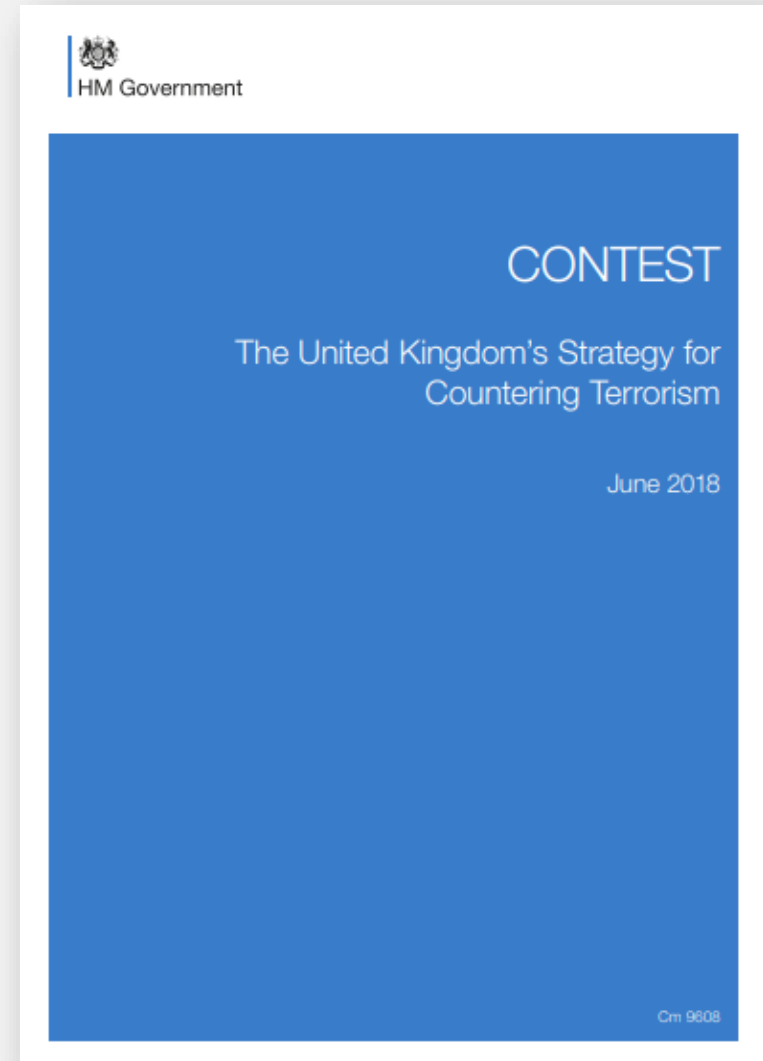
Whilst this has been referred into the CT police teams we are not aware of who is responsible, but it does high-light that these sentiments exist within the local population.

I feel that the most likely route we will come into contact with an individual at risk of radicalisation is through the Wyre Council Anti-Social Behaviour meeting and so we have extended an invite to our contact within the Pan Lancashire prevent Hub who has agreed to attend the meeting when she can.

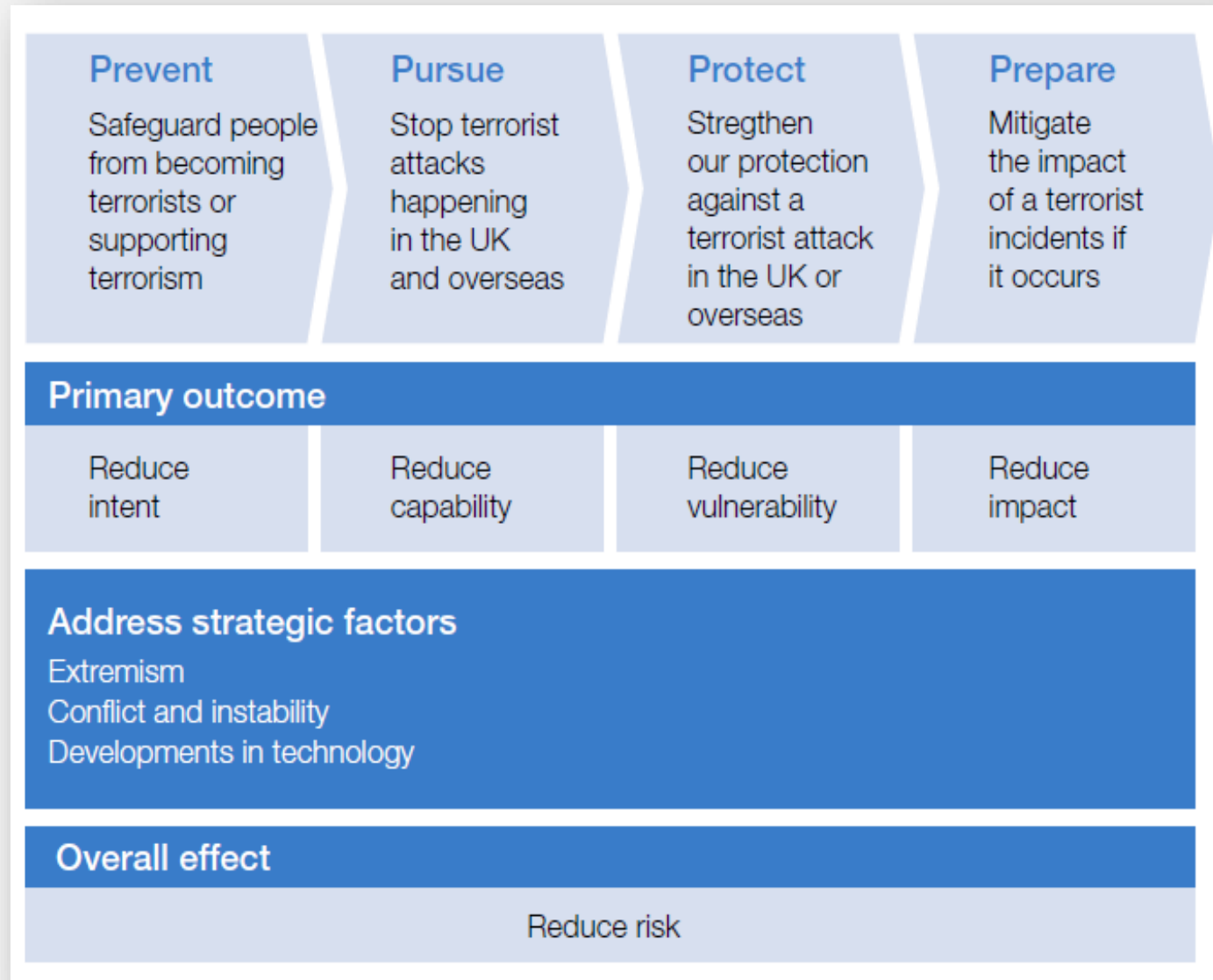
CONTEST STRATEGY

Aims:

“To reduce the risk to the UK and its interests overseas from international terrorism so that people can go about their lives freely and with confidence”



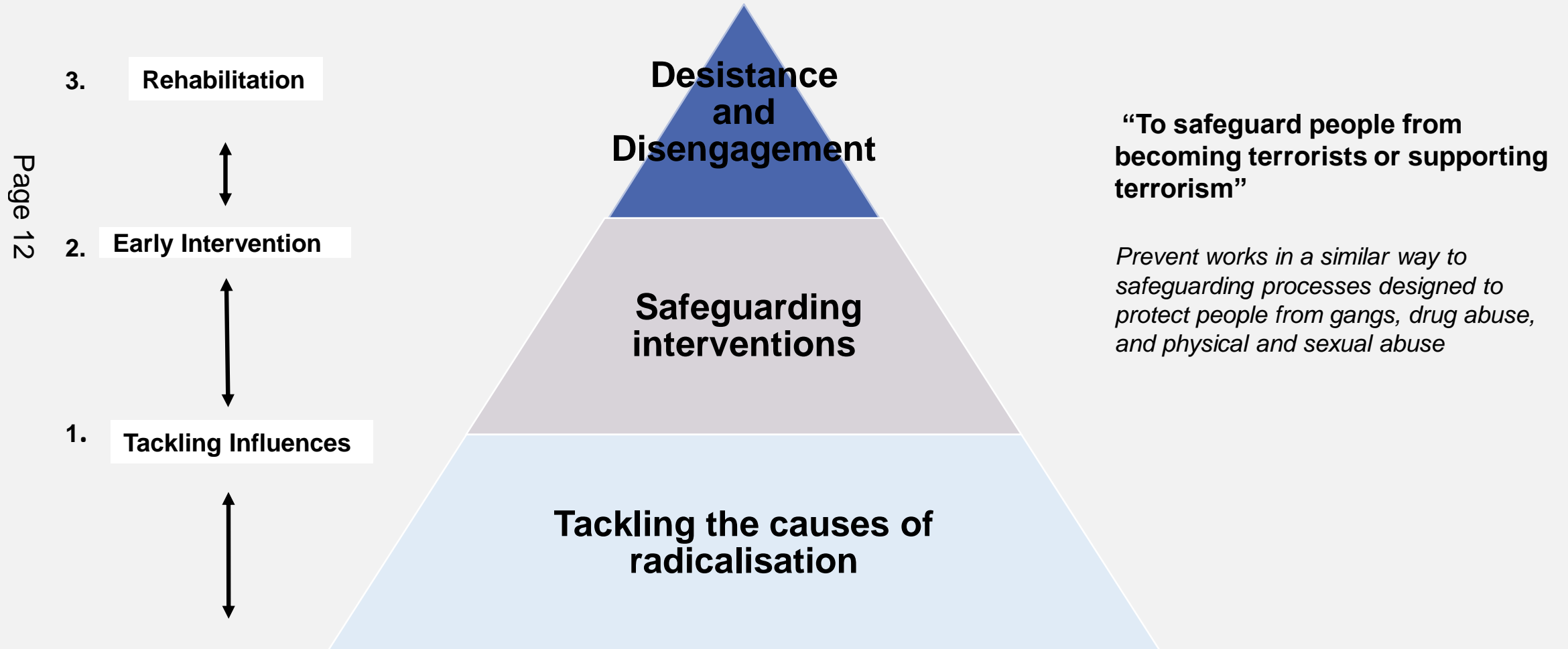
4 P'S



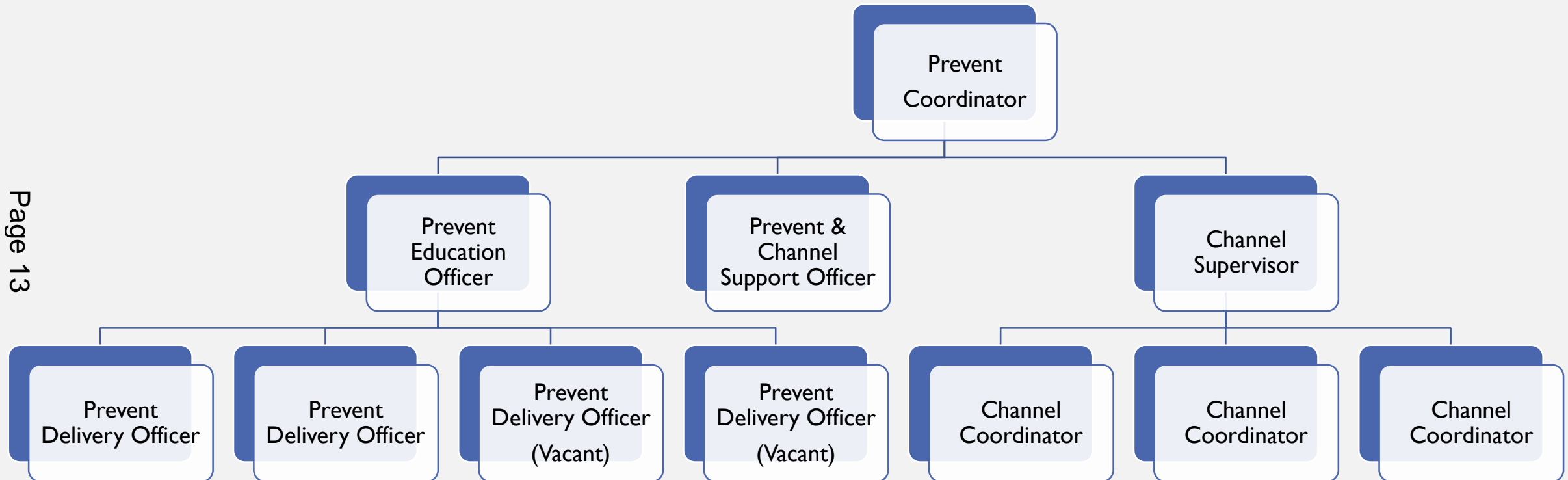
PREVENT OBJECTIVES

1. Tackle the causes of radicalisation and respond to the **ideological** challenge of terrorism.
2. Safeguard and support **Individuals** most at risk of radicalisation through early intervention, identifying them and offering support.
3. Enable those who have already engaged in terrorism to **disengage and rehabilitate**

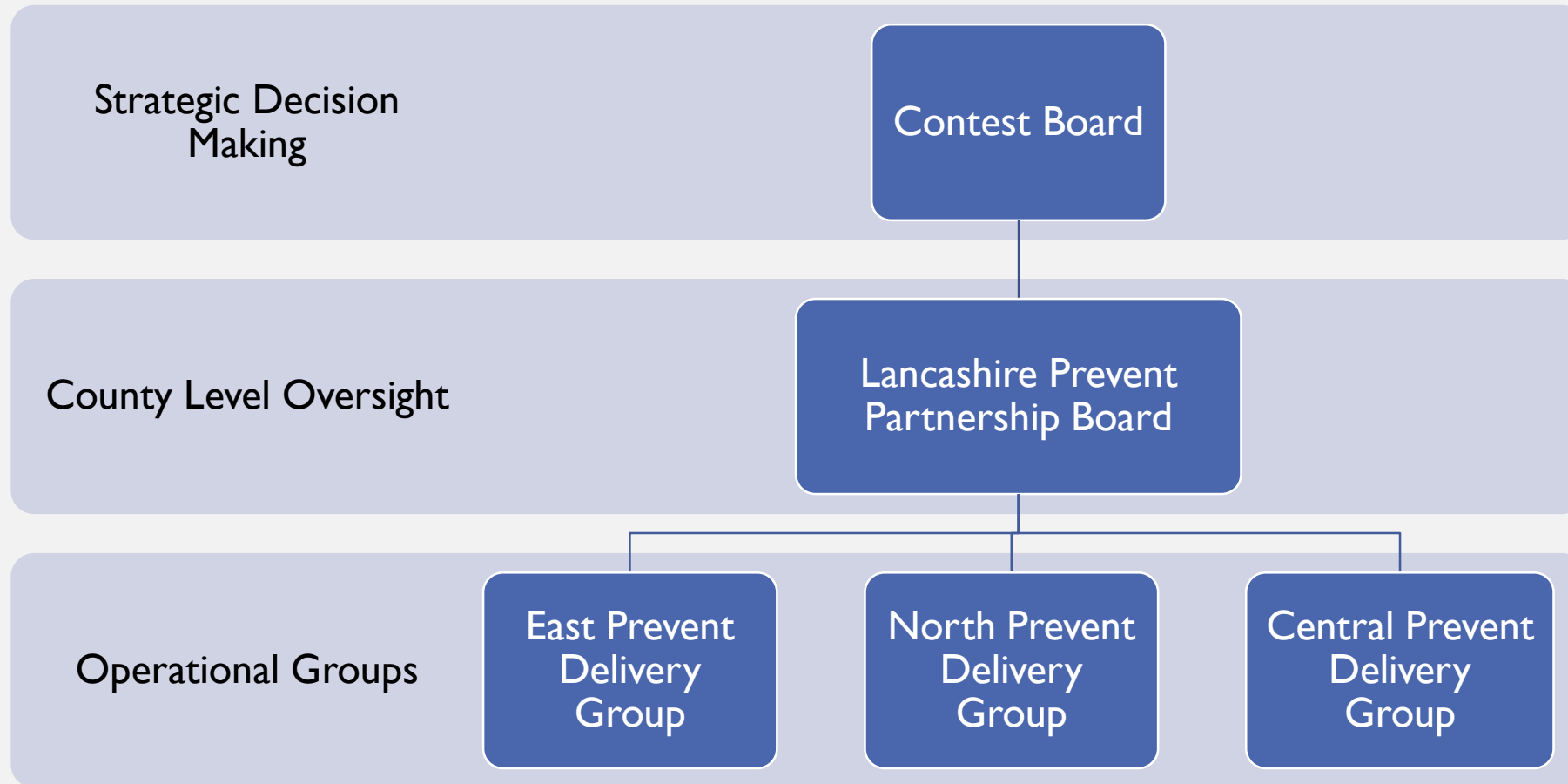
THE PREVENT MODEL



PREVENT & CHANNEL TEAM STRUCTURE



GOVERNANCE ARRANGEMENTS



NATIONAL THREAT LEVEL

- **Critical** – an attack is expected imminently
- **Severe** – an attack is highly likely
- **Substantial** – an attack is a strong possibility
- **Moderate** – an attack is possible, but not likely
- **Low** – an attack is unlikely

Substantial

LANCASHIRE RISK PROFILE

- Counter Terrorism Local Profile
 - Lancashire specific findings
- Threat by ideology
- Thematics
 - Lone Actors
 - Online extremism
 - Mental Ill Health
 - Other

Page 16



OVERVIEW OF DELIVERY

- Establishing a Centre of Excellence
- Regionalisation pilot
- Governance arrangements
- Lancashire Prevent Strategy & Action Plan
 - Partners: Education, Health, Criminal Justice, Police, Local Authorities etc.
 - CTLP recommendations (mitigating activity against the risk)
 - Training
 - Multi agency Safeguarding / Problem Solving
 - Prevent Duty Compliance
 - Community Engagement
 - Communication Strategy

ROLE OF ELECTED MEMBERS

- LGA Training - Prevent Leadership Essentials for Elected Members
- Understanding the local risk, threat and vulnerability
- Supporting the Prevent Team in local delivery
- Leading & Championing Prevent in the Local Authority area
- Engagement with community/ local groups to myth bust and address concerns
- Highlighting issues to local officers or the Prevent Team